



University of Missouri-Extension, Fire and Rescue Training Institute

## MERIS TRAINING APPLICATION MERIS SYSTEM OPERATOR COURSE

Date Requested: \_\_\_\_\_

Alternate Date Requested: \_\_\_\_\_

Class Location: \_\_\_\_\_

### POINT OF CONTACT

Name: \_\_\_\_\_

Email address: \_\_\_\_\_

Phone, Day: \_\_\_\_\_

Phone, Evening or Cell: \_\_\_\_\_

Requesting Agency: \_\_\_\_\_

Number of committed students: \_\_\_\_\_

Open class (anyone can register): Yes or No

Closed class (only for your agency): Yes or No

### OTHER HOST AGENCY REQUIREMENTS:

- SEMA requires a minimum of 30 days, but requests 60 days advance notice of scheduling.
- SEMA requires ALL applicants to have a training account on the SEMA website and MUST register for the course in their online system.
- If class does not have a minimum of 10 enrollments within two weeks of start date, SEMA has the right to cancel class.
- Contact with host agency IT person, if needed, to insure available internet access.
- Access to training room the day before scheduled class to set up and test access.

### RETURN THIS FORM TO:

MU FRTI  
240 Heinkel Building  
Columbia, MO 65211  
or [frti@missouri.edu](mailto:frti@missouri.edu)

Apply online at;  
<http://www.mufrti.org/meris/>

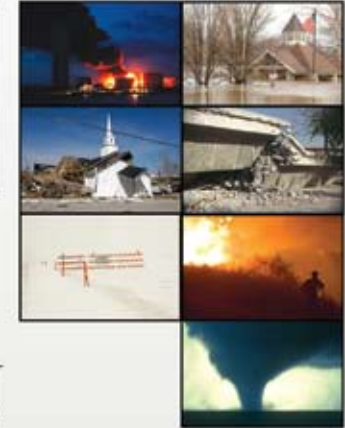
PRSTD STD  
U.S. Postage  
PAID  
University of Missouri

**MU Extension**  
University of Missouri-Columbia  
**Fire and Rescue Training Institute**  
240 Heinkel Building  
Columbia, MO 65211-1342  
[www.mufrti.org](http://www.mufrti.org)



# MERIS

MISSOURI EMERGENCY RESOURCE  
AND INFORMATION SYSTEM



## PLAN MANAGE MAINTAIN & EXECUTE

EMERGENCY RESPONSE  
& RECOVERY





# MERIS · MISSOURI EMERGENCY RESOURCE AND INFORMATION SYSTEM

The Department of Public Safety and the State Emergency Management Agency are pleased to announce the availability of training for the Missouri Emergency Resource Information System (MERIS). This is the primary disaster management and coordination system used within the state. Local jurisdictions are highly encouraged to participate in its use at no cost for their jurisdictions. State Agency personnel with management level disaster response duties are required to participate in this training.

## WHAT IS MERIS AND WHAT CAN IT DO FOR YOU!

MERIS provides a web-based, single-point login access to an integrated suite of software tools. Designed to assist local, state and federal agencies, as well as participating non-governmental organizations; to plan, manage, maintain and execute emergency response and recovery operations, as well as complex non-emergency events.

The MERIS portal functionality, enhances operational:

- Personnel presence and awareness,
- Inventory / Resource / Asset Management,
- Resource requests, and deployment of critical assets,
- GIS-based infrastructure and resource tracking,
- Situational awareness,
- Access to plans, procedures: SOPs, concept of operations, workflow, and
- Alert Notifications: incidents, roll-over (cell, pager, home, etc)

The primary tool within MERIS is E-Team software. E-Team allows participating entities to access the following functions, for collaboration and sharing:

- Incident reporting & tracking
- Resource management
- Situation reporting
- Action planning
- Alert notification
- GIS mapping
- Facility reporting
- Personnel reporting

Users of MERIS will be able to collaborate and share data with the State Emergency Management Agency Emergency Operations Center (SEOC), as well as other EOC's and governmental officials. The advantage of using MERIS is to provide a more efficient way to communicate situational awareness and resource needs throughout the state.

## WHO IS MERIS DESIGNED FOR:

- Local City and County Public Safety Officials
- All State Agencies
- Private Support Organizations
- All Hazards and Emergency Response Disciplines:
  - Police
  - Fire
  - Emergency Medical
  - HAZMAT
  - Intelligence
  - Public Health and Pandemic Planning
  - Agriculture
  - Transportation

## HOW DO I GET STARTED USING MERIS?

All users are required to attend a one-day MERIS System Operator course in order to be credentialed to use the system. MU Fire and Rescue Training Institute is recognized by the State Emergency Management Agency as a training provider for MERIS. There is NO COST for this training presently!

To host a class the local jurisdiction will be required to provide:

- Training facility
  - to accommodate up to 16 students with tables and chairs. (no more than 2 per 6' table or 3 per 8' table)
  - with projector screen
  - access to High Speed Internet without restrictions (firewall or security blocks.)
  - access to local IT person for any internet access issues.
- Computer lab with a work station for each student is an option\*
- A minimum of 10 with a maximum of 16 participants

\*MU Fire and Rescue Training Institute can provide a mobile computer lab which will extend the opportunity to train at more locations. However, we will still need the High Speed access point at the training site.

To request training, you can complete the MERIS Training Application included in this brochure or via the Internet. Apply online at: <http://www.mufrti.org/meris/>

## HARDWARE AND SOFTWARE REQUIREMENTS FOR USERS

- A personal computer with Microsoft Windows operating system (XP or VISTA)
- Microsoft Internet Explorer or comparable web browser with current updates
  - Current version of JAVA
- High Speed Internet access

## ORGANIZATIONS INVOLVED:

- University of Missouri-Extension, Fire and Rescue Training Institute
- State of Missouri, Department of Public Safety
- Missouri State Highway Patrol
- State of Missouri, Emergency Management Agency

